

CET TAIWAN

Fall | Spring



PROGRAM BASICS

Dates

FALL 2022

Arrival Date: 08/24/2022

Departure Date: 11/19/2022

SPRING 2023

Arrival Date: Late February 2023*

Departure Date: Mid-May 2023*

*See CET website for exact dates.

Application Deadlines

FALL 2022: 05/01/2022

SPRING 2023: 11/01/2022

Program Length

12 weeks

Language Pledge

Limited

Pre-Requisite

None

Recommended Credits

15



WHY CET TAIWAN?



Intensive
Chinese
Language



Custom
Internship
Placements



Local
Roommates



Supportive
On-site Staff

GET THE BEST OF BOTH WORLDS: INTENSIVE LANGUAGE + INTERNSHIPS AND ELECTIVES

CET Taiwan is an intensive language program based in Taipei, a progressive, multicultural, vibrant city. As a CET student you will take language courses with alongside other NTU international students from around the world. You can enroll in an internship course and use your Chinese language skills on the job while boosting your résumé with international work experience, or choose an elective course that focuses on Taiwanese culture or regional politics. Whether you choose an internship or the elective, you go home with sharpened Chinese language skills and an appreciation for Taiwanese culture.

ACADEMICS

INTENSIVE CHINESE LANGUAGE

180 hours. 12 credits.

- Direct-enroll in NTU's Chinese Language Department.
- All levels available, from novice to advanced.

ELECTIVE

Hours vary. 3 credits.

Taught in English.

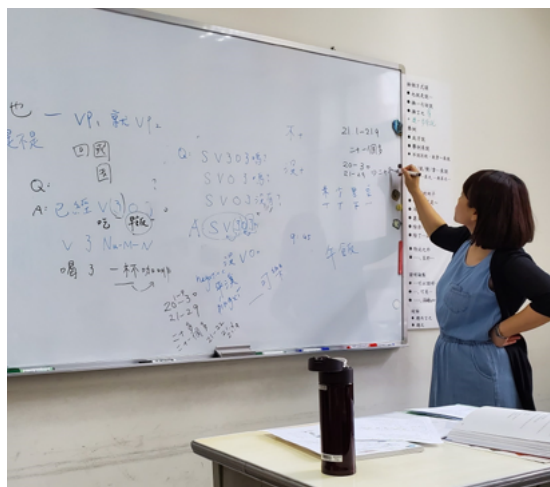
- Internship. Course + Placement. 150 hours.
- Cross-Strait Relations
- Taiwanese History, Culture, and National Identity

"Finding yourself in a different culture while working at an internship and handling a demanding course load is not an easy feat, but it is absolutely manageable, and I found learning how to manage it so much fun!"

— Sarah Phipps, UNC Chapel Hill

SOME OF OUR FAVORITE INTERNSHIP PLACEMENTS

- Geber Consulting
- Institute of Forensic Medicine, Ministry of Justice
- Taipei Veteran General Hospital
- Taiwan Citizen Participation Association
- The China Post
- Magnifique Creative Media



HOUSING

- 🏠 Apartment
- 📍 Off-campus housing
- 👥 Live with CET peers and local roommates
- 👤 4-8 people/apartment
- 🛏 2 people/room
- 🍳 Shared kitchen and dining space, bathroom, in-unit washer
- 📶 Wifi, A/C, shared TV, linens, basic furnishing

LOCAL ROOMMATES

- You share an apartment with CET students and Taiwanese roommates. This instant support network offers an opportunity for shared late-night study sessions, weekends at the hot springs in Yilan, or even political discussions over tea atop Maokong Mountain.

"I don't think I would ever have had such an appreciation or understanding for Taiwan without this immersive experience. It's really cool to get to know another culture in this way. Especially with having the **local roommates, they help a lot with learning the culture and language** and are just all-around fantastic people!"

— Melaura Rice, Grand Valley State University



GET TO KNOW TAIPEI



Host University

National Taiwan University (NTU)



Landmarks

Chiang Kai-Shek Memorial
Elephant Mountain
Taipei 101



Must-Try Foods

Biandang, Taiwanese bento box
Manguo xuehuabing, mango shaved ice
Beef noodle soup. Noodles are a high art in Taiwan, but the variety is endless!



Must-See Sights

Explore Taipei's famous night markets.
Surf at Fulong Beach.
Take a cable car to the top of the mountains of Maokong.

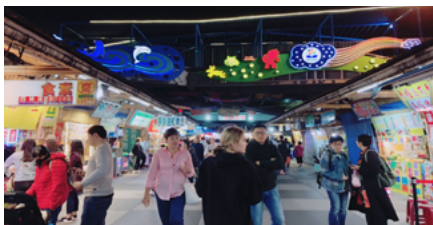


Must-Buy Mementos

An umbrella for sudden afternoon showers.
(You are on a tropical island after all.)
Huanbaokuai, reusable chopsticks to minimize your carbon footprint while abroad (and back at home).

ACTIVITIES & EXCURSIONS

- We take you on a weekend excursion to **Taroko Gorge**. Visit a Buddhist monastery and share a vegan lunch with the monks. Watch the sunrise over the beach. Hike along a river canyon. Stay overnight in a homestay at a local village.



HOW TO APPLY

1. Start an application at cetacademicprograms.com/college-greater-china
2. Complete the required components:
 - Application Form
 - Faculty & Study Abroad Office Recommendations
 - Official Transcript

DEADLINES: Fall: May 1 | Spring: November 1

CET SCHOLARSHIPS

CET is committed to making study abroad accessible for all students. We award over \$400,000 in need-based aid, access grants, and merit-based scholarships each year. **Learn more and apply at** cetacademicprograms.com/scholarships-college

ALSO IN GREATER CHINA:

Check out these other CET Programs!

- CET Taiwan: Summer
- CET Beijing
- CET Shanghai

"The program faculty have done a wonderful job of putting our study abroad **experience here in an academic context** for us to think about. They have given us **resources to analyze**, as well as giving us the **space to freely think and openly discuss.**"

— Grayson Ross, University of Texas-Austin



All photos courtesy of CET students and staff.